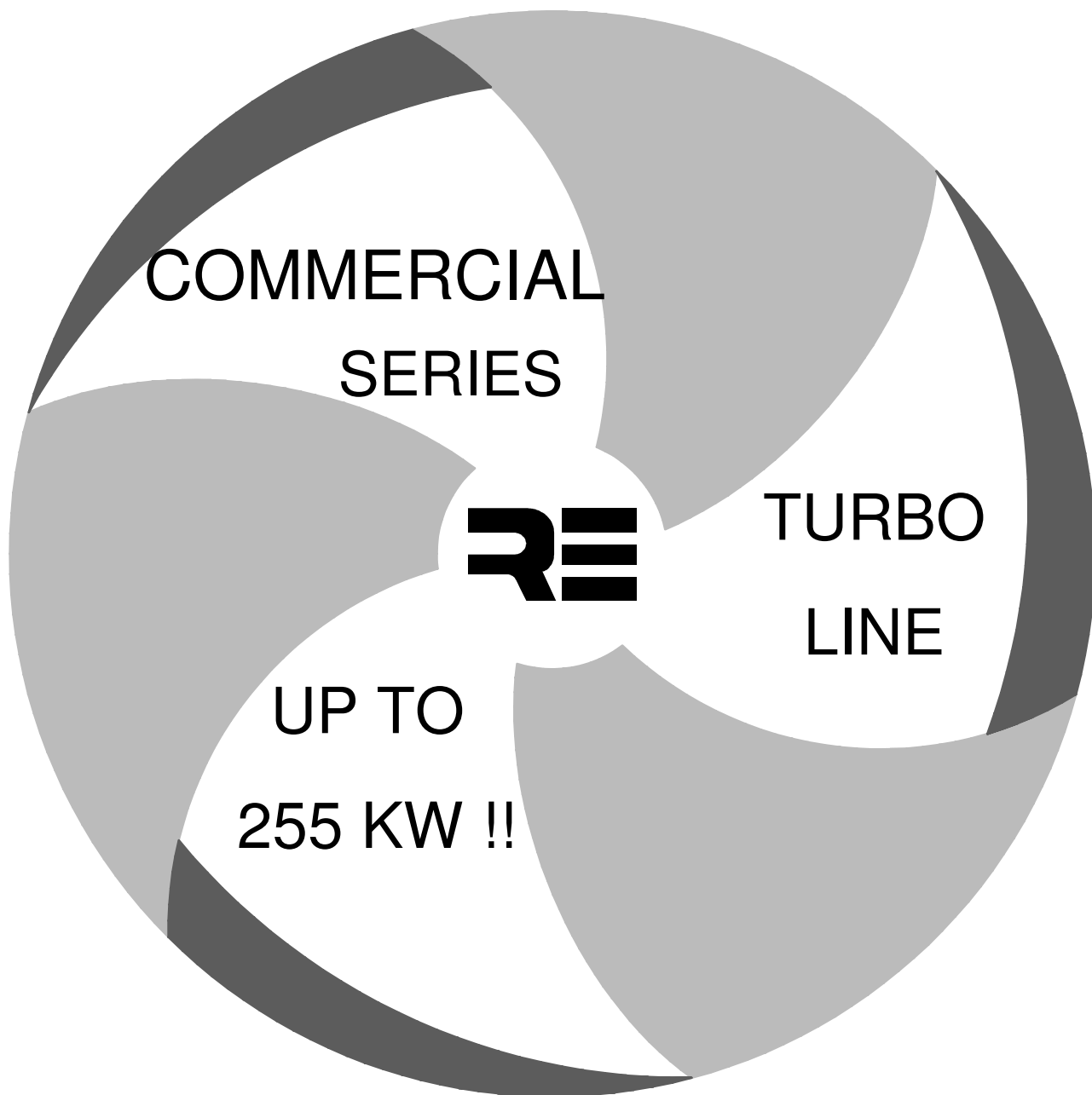




REMOTE CONDENSER



- High performance series
- More than 200 different models

- Low noise execution
- Small size at high capacity



ROEN EST

Via delle Industrie 4 - 34077 Ronchi dei Legionari (GO) Italia

☎ 0039-0481-474140 📠 0039-0481-779997 ✉ info@roenest.it

ORDER CODE

CATALOG CODE

C	A	S	8	11	4	2	6	Y	H	
<i>Descrizione</i>	<i>Module(BxL)</i>	<i>Construction</i>	<i>Diameter</i>	<i>Modules</i>		<i>N° rows</i>	<i>Geometry</i>	<i>Fan</i>	<i>Connection</i>	<i>Installation</i>
C=Condensator	A= 1050 x1470	S=Standard	4 = 450	11=	□	2 = 2 rows	2=S22-10	4 = 4 poli	Y= Star	H=horizontal
D=Drycooler	D= 1575 x1470	R=Turbo	5 = 500	12=	□□	3 = 3 rows	3=S30-12	6 = 6 poli	D=triangle	V=Vertical
	G= 875 x1000		6 = 630	13=	□□□	4 = 4 rows		8 = 8 poli	M=mono	
	H= 875 x1250		8 = 800	14=	□□□□	5 = 5 rows		1=12 poli		
	J= 1050 x1250		9 = 900	15=	□□□□□					
	L= 800 x 800			22=	□□ □□					
				23=	□□□ □□□					
				24=	□□□□ □□□□					
				25=	□□□□□ □□□□□					

POSSIBLE COMBINATIONS

SERIES	DIAM.	MODULES				
A	800	□	□□	□□□	□□□□	□□□□□
	900	□	□□	□□□	□□□□	□□□□□
D	800	□	□□	□□□	□□□□	□□□□□
	900	□	□□	□□□	□□□□	□□□□□
G	500	□	□□	□□□	□□□□	
H	500	□	□□	□□□	□□□□	
	630	□	□□	□□□	□□□□	
J	630	□	□□	□□□	□□□□	
L	450	□	□□	□□□	□□□□	
	500	□	□□	□□□	□□□□	

ANALITIC SELECTION

REQUIRED CAPACITY

The capacity needed by the HVAC circuit can be evaluated only using this formula.

$$Q_c = Q_e * F_c * F_k$$

Q_c = Condensing Capacity

F_c = Refrigerant cycle factor

Q_e = Evaporating Capacity

F_k = Compressor type

F_c Cond. Temp.	Evaporating Temp (°C)					
	-40	-30	-20	-10	0	10
30	1.66	1.46	1.32	1.22	1.16	1.12
35	1.74	1.52	1.36	1.25	1.19	1.14
40	1.82	1.58	1.41	1.30	1.22	1.17
45	1.90	1.64	1.46	1.34	1.27	1.20
50	1.99	1.71	1.53	1.40	1.31	1.23
55	--	1.78	1.60	1.46	1.35	1.28
60	--	--	1.67	1.52	1.41	1.32

F_k	Ermetic	Semierm.	Open
		1,1	1,1

ANALITIC SELECTION

STANDARD CONDITIONS

Every data present in this catalogue refers to the following operative conditions

Air Inlet temperature Ta= 25°C

Refrigerant Condensing temperature Tc=40°C

Refrigerant R=404A

Altitude 30 m

EQUIVALENT CAPACITY

If the environmental conditions differ from the standards ones you will use this formula to evaluate the equivalent capacity of every model present in this catalogue.

$$Q_{c_{eq}} = Q_{c_k} * Fr * (\Delta t / 15) * Fh * FI$$

Q_{c_{eq}} = Equivalent conditions

Q_{c_k} = Capacity in std. conditions

Fr = Refrigerant factor

Fh = Altitude factor

FI = Fin material factor

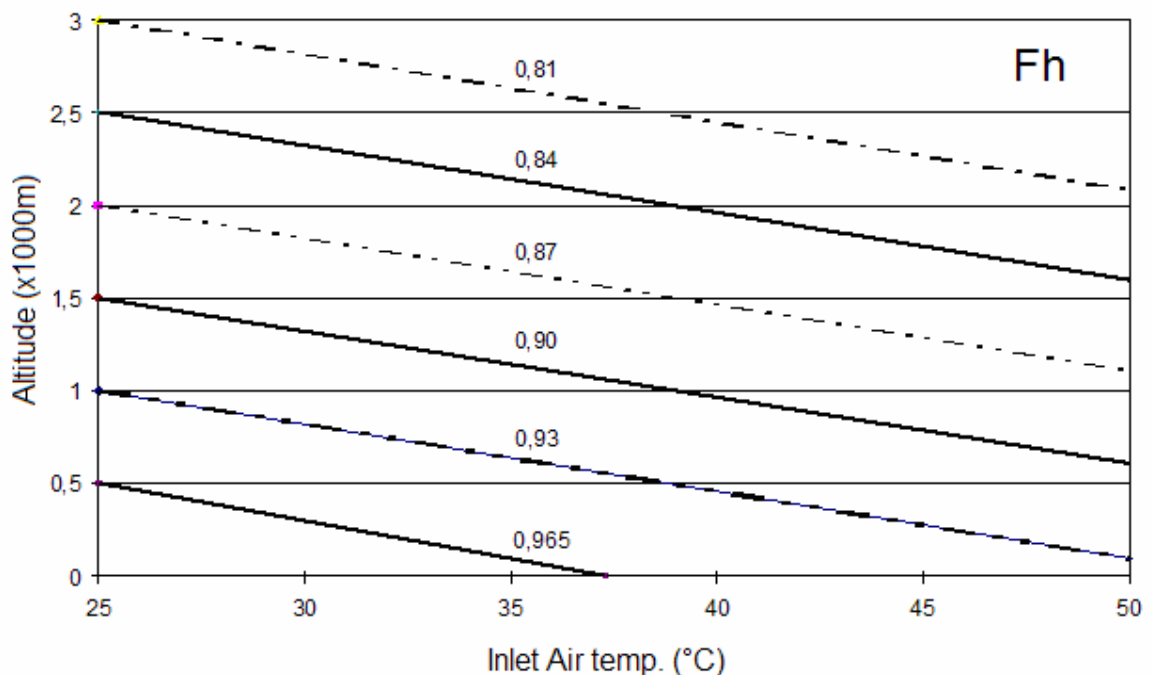
Δt = T_c - T_a

Fr

Refrigerant			
R22	R134A	R404A	R407C
0,96	0,93	1,00	0,87

FI

Materials		
Al	AP	CU
1,00	0,97	1,03



NOISE LEVEL

SOUND PRESSURE LEVEL

It's the mean value calculated on a cubic shape wrapping the whole machine standing at a distance of 10 meter of every side (free field calculation)

This value has been calculated on the Sound power level data published by our fans suppliers

NON STANDARD DISTANCES

If the distance differs from our standard one (10m) please add the following coefficient to the data present in this catalogue

Distance (m)

Diam(mm)	2	3	5	10	15	20	30	40	60	80	100
500-630	12	9,5	5,5	0	-3	-5,5	-8,5	-11	-14	-16	-18
800-910	10	8	5	0	-3	-5,5	-8,5	-11	-14	-16	-18

NOTE:

These data are indicative and do not consider any environmental influence

TURBO MINI COMMERCIAL SERIES

CODE	D			Y			IN	OUT	WEIGHT	VOL	SUP	Nr.	FAN
	KW	m ³ /h	DB(A)	KW	m ³ /h	DB(A)							
CLR411224	17	6.550	41	15	5.099	38	1x22	1x16	57	4	21	1	L
CLR411324	23	6.069	41	21	4.835	38	1x22	1x16	63	6	32	1	L
CLR411424	26	5.627	41	23	4.505	38	1x22	1x16	69	8	43	1	L
CLR412224	34	13.100	44	31	10.199	41	1x22	1x16	104	8	43	2	L
CLR412324	46	12.137	44	40	9.670	41	1x22	1x16	116	12	64	2	L
CLR412424	52	11.253	44	46	9.009	41	1x22	1x16	128	15	86	2	L
CLR413324	68	18.206	46	61	14.505	43	1x28	1x22	169	17	96	3	L
CLR413424	78	16.880	46	69	13.514	43	1x28	1x22	187	22	129	3	L
CLR511224	18	8.225	42	17	6.364	36	1x22	1x16	57	4	21	1	G
CLR511324	25	7.729	42	22	5.786	36	1x22	1x16	63	6	32	1	G
CLR511424	30	7.237	42	25	5.306	36	1x22	1x16	69	8	43	1	G
CLR511524	32	6.723	42	28	4.711	36	1x22	1x16	75	10	54	1	G
CLR512224	38	16.451	45	33	12.727	39	1x22	1x16	104	8	43	2	G
CLR512324	51	15.457	45	45	11.572	39	1x22	1x16	116	12	64	2	G
CLR512424	60	14.474	45	51	10.611	39	1x28	1x22	128	15	86	2	G
CLR512524	66	13.447	45	54	9.421	39	1x28	1x22	140	19	107	2	G
CLR513324	76	23.186	47	67	17.358	41	1x28	1x22	169	17	96	3	G
CLR513424	90	21.711	47	76	15.917	41	1x28	1x22	187	22	129	3	G
CLR513524	98	20.170	47	81	14.132	41	1x35	1x28	205	28	161	3	G
CLR514424	120	28.948	48	101	21.223	42	1x35	1x28	248	29	171	4	G
CLR514524	131	26.893	48	108	18.843	42	1x35	1x28	255	37	214	4	G
CLR511226	16	5.371	34	14	3.940	29	1x22	1x16	57	4	21	1	H
CLR511326	21	5.104	34	17	3.498	29	1x22	1x16	63	6	32	1	H
CLR511426	24	4.706	34	18	3.102	29	1x22	1x16	69	8	43	1	H
CLR512226	32	10.741	37	28	7.881	32	1x22	1x16	104	8	43	2	H
CLR512326	41	10.207	37	34	6.996	32	1x22	1x16	116	12	64	2	H
CLR512426	47	9.413	37	36	6.203	32	1x22	1x16	128	15	86	2	H
CLR513326	63	15.311	39	51	10.494	34	1x28	1x22	169	17	96	3	H
CLR513426	71	14.119	39	54	9.305	34	1x28	1x22	187	22	129	3	H
CLR514326	84	20.415	40	68	13.992	35	1x28	1x22	224	22	129	4	H
CLR514426	95	19.800	40	72	12.407	35	1x28	1x22	248	29	171	4	H
CLR511228	14	3.595	28	12	2.564	25	1x22	1x16	57	4	21	1	N
CLR511328	16	3.317	28	13	2.117	25	1x22	1x16	63	6	32	1	N
CLR511428	18	3.045	28	12	1.703	25	1x22	1x16	69	8	43	1	N
CLR512228	26	7.189	31	23	5.129	28	1x22	1x16	104	8	43	2	N
CLR512328	33	6.635	31	25	4.235	28	1x22	1x16	116	12	64	2	N
CLR512428	36	6.089	31	23	3.407	28	1x22	1x16	128	15	86	2	N
CLR513228	40	10.784	33	34	7.693	30	1x22	1x16	151	11	64	3	N
CLR513328	50	9.952	33	38	6.352	30	1x22	1x16	169	17	96	3	N
CLR513428	53	9.134	33	35	5.110	30	1x22	1x16	187	22	129	3	N
CLR514328	67	13.269	34	51	8.469	31	1x28	1x22	224	22	129	4	N
CLR514428	71	12.787	34	47	6.813	31	1x28	1x22	248	29	171	4	N

FANS	CODE	DIAM. (mm)	SUPPLY LINE	POWER (kW)		CURRENT(A)		RPM		S.POWER L.		SUPPLY LINE	POWER (kW)	CUR. (A)	RPM
				D	Y	D	Y	D	Y	D	Y				
G		500	400/3/50	0,78	0,55	1,35	0,94	1.340	1.000	76	70	230/1/50	0,77	3,40	1.210
H		500	400/3/50	0,32	0,20	0,74	0,41	900	640	68	63	230/1/50	0,29	1,25	890
L		450	400/3/50	0,40	0,30	0,95	0,55	1.400	1.180	75	72	230/1/50	0,44	2,25	1.380
N		500	400/3/50	0,12	0,07	0,30	0,13	670	550	62	59	230/1/50	0,15	0,66	670

TURBO COMMERCIAL SERIES 4

CODE	D			Y			IN mm	OUT mm	WEIGHT kg	VOL dm ³	SUP m ²	Nr. FAN	FAN TYPE
	KW	m ³ /h	DB(A)	KW	m ³ /h	DB(A)							
CGR511224	23	8.859	42	21	6.915	36	1x22	1x16	86	6	33	1	G
CGR511324	31	8.400	42	28	6.485	36	1x22	1x16	92	8	49	1	G
CGR511424	36	8.017	42	31	6.066	36	1x22	1x16	98	11	65	1	G
CGR511524	40	7.715	42	33	5.627	36	1x22	1x16	104	14	82	1	G
CGR512224	46	17.718	45	43	13.831	39	1x22	1x16	144	11	65	2	G
CGR512324	62	16.800	45	54	12.971	39	1x28	1x22	156	16	98	2	G
CGR512424	72	16.033	45	62	12.133	39	1x28	1x22	168	21	131	2	G
CGR512524	80	15.429	45	66	11.255	39	1x28	1x22	180	27	164	2	G
CGR513324	93	25.200	47	82	19.456	41	1x28	1x22	218	24	147	3	G
CGR513424	108	24.050	47	93	18.199	41	1x35	1x28	236	31	196	3	G
CGR513524	120	23.144	47	98	16.882	41	1x35	1x28	254	39	245	3	G
CGR514424	144	32.067	48	124	24.265	42	1x35	1x28	309	42	262	4	G
CGR514524	160	30.859	48	131	22.509	42	1x35	1x28	333	52	327	4	G
CHR511224	28	9.129	42	24	7.065	36	1x22	1x16	101	7	41	1	G
CHR511324	36	8.823	42	31	6.837	36	1x22	1x16	107	11	61	1	G
CHR511424	43	8.537	42	33	6.510	36	1x22	1x16	113	15	82	1	G
CHR511524	45	8.211	42	37	6.103	36	1x22	1x16	119	18	102	1	G
CHR512224	55	18.257	45	49	14.131	39	1x22	1x16	172	13	82	2	G
CHR512324	70	17.647	45	62	13.673	39	1x28	1x22	184	20	123	2	G
CHR512424	84	17.075	45	68	13.020	39	1x28	1x22	196	27	164	2	G
CHR512524	91	16.422	45	74	12.206	39	1x28	1x22	208	33	204	2	G
CHR513324	106	26.470	47	93	20.510	41	1x35	1x28	261	29	184	3	G
CHR513424	126	25.612	47	101	19.530	41	1x35	1x28	279	39	245	3	G
CHR513524	136	24.633	47	112	18.309	41	1x35	1x28	297	48	307	3	G
CHR514424	169	34.149	48	135	26.040	42	1x35	1x28	420	51	327	4	G
CHR514524	182	32.844	48	149	24.412	42	1x35	1x28	444	63	409	4	G
CHR611224	34	16.230	56	32	12.999	51	1x22	1x16	101	7	41	1	I
CHR611324	48	15.082	56	43	11.948	51	1x22	1x16	107	11	61	1	I
CHR611424	56	14.232	56	49	11.152	51	1x22	1x16	113	15	82	1	I
CHR611524	62	13.346	56	54	10.470	51	1x28	1x22	119	18	102	1	I
CHR612224	69	32.460	59	63	25.999	54	1x28	1x22	172	13	82	2	I
CHR612324	95	30.163	59	84	23.897	54	1x35	1x28	184	20	123	2	I
CHR612424	113	28.463	59	99	22.303	54	1x35	1x28	196	27	164	2	I
CHR612524	124	26.693	59	107	20.941	54	1x35	1x28	208	33	204	2	I
CHR613324	144	45.245	61	126	35.845	56	1x35	1x28	261	29	184	3	I
CHR613424	169	42.695	61	148	33.455	56	1x35	1x28	279	39	245	3	I
CHR613524	186	40.039	61	161	31.411	56	1x35	1x28	297	48	307	3	I
CHR614424	225	56.927	62	198	44.607	57	1x42	1x35	420	51	327	4	I
CHR614524	247	53.385	62	214	41.881	57	1x42	1x35	444	63	409	4	I
CJR611224	39	16.768	56	36	13.608	51	1x22	1x16	109	9	49	1	I
CJR611324	53	15.983	56	48	12.815	51	1x22	1x16	115	13	74	1	I
CJR611424	63	15.203	56	56	12.118	51	1x28	1x22	121	18	98	1	I
CJR611524	70	14.495	56	60	11.203	51	1x28	1x22	127	22	123	1	I
CJR612224	78	33.536	59	72	27.215	54	1x28	1x22	194	16	98	2	I
CJR612324	107	31.965	59	95	25.630	54	1x35	1x28	206	24	147	2	I
CJR612424	126	30.405	59	112	24.235	54	1x35	1x28	218	32	196	2	I
CJR612524	140	28.991	59	121	22.406	54	1x35	1x28	230	40	245	2	I
CJR613324	160	47.948	61	144	38.445	56	1x35	1x28	298	35	221	3	I
CJR613424	190	45.608	61	168	36.353	56	1x42	1x35	316	46	294	3	I
CJR613524	210	43.486	61	181	33.609	56	1x42	1x35	334	58	368	3	I
CJR614424	253	60.811	62	224	48.471	57	1x42	1x35	417	61	393	4	I
CJR614524	280	57.981	62	241	44.812	57	1x42	1x35	441	76	491	4	I

FANS	CODE	DIAM. (mm)	SUPPLY LINE	POWER (kW)		CURRENT(A)		RPM		S.POWER L.		SUPPLY LINE	POWER (kW)	CUR. (A)	RPM
				D	Y	D	Y	D	Y	D	Y				
G		500	400/3/50	0,78	0,55	1,35	0,94	1.340	1.000	76	70	230/1/50	0,77	3,40	1.210
I		630	400/3/50	1,90	1,35	3,20	2,20	1.340	1.070	90	85				

TURBO COMMERCIAL SERIES 6

CODE	D			Y			IN mm	OUT mm	WEIGHT kg	VOL dm ³	SUP m ²	Nr. FAN	FAN TYPE
	KW	m ³ /h	DB(A)	KW	m ³ /h	DB(A)							
CGR511226	20	5.806	34	17	4.259	29	1x22	1x16	86	6	33	1	H
CGR511326	25	5.493	34	21	3.927	29	1x22	1x16	92	8	49	1	H
CGR511426	28	5.182	34	22	3.573	29	1x22	1x16	98	11	65	1	H
CGR511526	30	4.919	34	21	3.069	29	1x22	1x16	104	14	82	1	H
CGR512226	39	11.613	37	33	8.518	32	1x22	1x16	144	11	65	2	H
CGR512326	49	10.987	37	41	7.853	32	1x22	1x16	156	16	98	2	H
CGR512426	56	10.363	37	44	7.147	32	1x22	1x16	168	21	131	2	H
CGR512526	59	9.837	37	42	6.137	32	1x22	1x16	180	27	164	2	H
CGR513326	75	16.480	39	62	11.780	34	1x28	1x22	218	24	147	3	H
CGR513426	84	15.545	39	66	10.720	34	1x28	1x22	236	31	196	3	H
CGR513526	89	14.756	39	63	9.206	34	1x28	1x22	254	39	245	3	H
CGR514426	112	20.727	40	87	14.293	35	1x35	1x28	309	42	262	4	H
CGR514526	119	19.675	40	83	12.275	35	1x35	1x28	333	52	327	4	H
CHR511226	23	5.969	34	20	4.259	29	1x22	1x16	101	7	41	1	H
CHR511326	29	5.727	34	23	3.928	29	1x22	1x16	107	11	61	1	H
CHR511426	32	5.482	34	24	3.797	29	1x22	1x16	113	15	82	1	H
CHR511526	33	5.262	34	23	3.336	29	1x22	1x16	119	18	102	1	H
CHR512226	45	11.938	37	38	8.518	32	1x22	1x16	172	13	82	2	H
CHR512326	56	11.453	37	47	7.855	32	1x22	1x16	184	20	123	2	H
CHR512426	63	10.965	37	49	7.593	32	1x28	1x22	196	27	164	2	H
CHR512526	67	10.525	37	46	6.673	32	1x28	1x22	208	33	204	2	H
CHR513326	85	17.180	39	70	11.783	34	1x28	1x22	261	29	184	3	H
CHR513426	95	16.447	39	74	11.390	34	1x35	1x28	279	39	245	3	H
CHR513526	100	15.787	39	69	10.009	34	1x35	1x28	297	48	307	3	H
CHR514426	128	21.929	40	98	15.187	35	1x35	1x28	420	51	327	4	H
CHR514526	133	21.049	40	92	13.345	35	1x35	1x28	444	63	409	4	H
CHR611226	29	9.911	43	26	8.220	38	1x22	1x16	101	7	41	1	J
CHR611326	38	9.364	43	33	7.613	38	1x22	1x16	107	11	61	1	J
CHR611426	44	8.853	43	38	7.037	38	1x22	1x16	113	15	82	1	J
CHR611526	46	8.402	43	38	6.339	38	1x22	1x16	119	18	102	1	J
CHR612226	57	19.823	46	53	16.439	41	1x22	1x16	172	13	82	2	J
CHR612326	75	18.729	46	67	15.225	41	1x28	1x22	184	20	123	2	J
CHR612426	86	17.706	46	75	14.075	41	1x28	1x22	196	27	164	2	J
CHR612526	92	16.804	46	76	12.678	41	1x28	1x22	208	33	204	2	J
CHR613326	113	28.093	48	100	22.838	43	1x35	1x28	261	29	184	3	J
CHR613426	130	26.559	48	113	21.112	43	1x35	1x28	279	39	245	3	J
CHR613526	138	25.206	48	115	19.017	43	1x35	1x28	297	48	307	3	J
CHR614426	174	35.412	49	151	28.149	44	1x35	1x28	420	51	327	4	J
CHR614526	184	33.608	49	153	25.356	44	1x35	1x28	444	63	409	4	J
CJR611226	32	10.207	43	30	8.522	38	1x22	1x16	109	9	49	1	J
CJR611326	41	9.768	43	38	8.020	38	1x22	1x16	115	13	74	1	J
CJR611426	48	9.351	43	40	7.037	38	1x22	1x16	121	18	98	1	J
CJR611526	51	8.963	43	43	6.907	38	1x22	1x16	127	22	123	1	J
CJR612226	64	20.415	46	59	17.043	41	1x28	1x22	194	16	98	2	J
CJR612326	84	19.536	46	75	16.039	41	1x28	1x22	206	24	147	2	J
CJR612426	95	18.702	46	79	14.074	41	1x35	1x28	218	32	196	2	J
CJR612526	103	17.927	46	86	13.815	41	1x35	1x28	230	40	245	2	J
CJR613326	125	29.304	48	113	24.059	43	1x35	1x28	298	35	221	3	J
CJR613426	144	28.053	48	120	21.111	43	1x35	1x28	316	46	294	3	J
CJR613526	154	26.890	48	128	20.722	43	1x35	1x28	334	58	368	3	J
CJR614426	192	37.404	49	160	28.148	44	1x42	1x35	417	61	393	4	J
CJR614526	205	35.853	49	171	27.629	44	1x42	1x35	441	76	491	4	J

FANS	CODE	DIAM. (mm)	SUPPLY LINE	POWER (kW)		CURRENT(A)		RPM		S.POWER L.		SUPPLY LINE	POWER (kW)	CUR. (A)	RPM
				D	Y	D	Y	D	Y	D	Y				
H		500	400/3/50	0,32	0,20	0,74	0,41	900	640	68	63	230/1/50	0,29	1,25	890
J		630	400/3/50	0,69	0,48	1,25	0,78	900	690	77	72	230/1/50	0,78	3,50	ε

TURBO COMMERCIAL SERIES 8

CODE	D			Y			IN mm	OUT mm	WEIGHT kg	VOL dm ³	SUP m ²	Nr. FAN	FAN TYPE
	KW	m ³ /h	DB(A)	KW	m ³ /h	DB(A)							
CGR511228	16	3.762	28	14	2.726	25	1x22	1x16	86	6	33	1	N
CGR511328	20	3.439	28	15	2.398	25	1x22	1x16	92	8	49	1	N
CGR512228	32	7.525	31	28	5.453	28	1x22	1x16	144	11	65	2	N
CGR512328	38	6.879	31	30	4.795	28	1x22	1x16	156	16	98	2	N
CGR513228	48	11.287	33	41	8.179	30	1x22	1x16	200	16	98	3	N
CGR513328	57	10.318	33	45	7.193	30	1x22	1x16	218	24	147	3	N
CGR514228	64	15.049	34	54	10.905	31	1x28	1x22	261	21	131	4	N
CGR514328	76	13.757	34	60	9.591	31	1x28	1x22	285	31	196	4	N
CHR511228	18	3.835	28	15	2.793	25	1x22	1x16	101	7	41	1	N
CHR511328	21	3.549	28	16	2.519	25	1x22	1x16	107	11	61	1	N
CHR512228	37	7.670	31	30	5.587	28	1x22	1x16	172	13	82	2	N
CHR512328	43	7.097	31	33	5.038	28	1x22	1x16	184	20	123	2	N
CHR513228	55	11.505	33	45	8.380	30	1x22	1x16	243	19	123	3	N
CHR513328	63	10.646	33	50	7.557	30	1x28	1x22	261	29	184	3	N
CHR514228	72	15.340	34	61	11.173	31	1x28	1x22	372	25	164	4	N
CHR514328	84	14.195	34	66	10.076	31	1x28	1x22	396	38	245	4	N
CHR611228	24	6.988	36	22	5.313	29	1x22	1x16	101	7	41	1	K
CHR611328	31	6.483	36	26	4.983	29	1x22	1x16	107	11	61	1	K
CHR611428	34	6.030	36	28	4.461	29	1x22	1x16	113	15	82	1	K
CHR612228	49	13.976	39	43	10.626	32	1x22	1x16	172	13	82	2	K
CHR612328	61	12.967	39	53	9.967	32	1x28	1x22	184	20	123	2	K
CHR612428	68	12.060	39	55	8.922	32	1x28	1x22	196	27	164	2	K
CHR613328	92	19.450	41	79	14.950	34	1x28	1x22	261	29	184	3	K
CHR613428	102	18.090	41	83	13.383	34	1x35	1x28	279	39	245	3	K
CHR614328	123	25.933	42	105	19.933	35	1x35	1x28	396	38	245	4	K
CHR614428	137	24.120	42	110	17.844	35	1x35	1x28	420	51	327	4	K
CJR611228	28	7.230	36	24	5.534	29	1x22	1x16	109	9	49	1	K
CJR611328	34	6.783	36	29	4.997	29	1x22	1x16	115	13	74	1	K
CJR611428	37	6.375	36	29	4.482	29	1x22	1x16	121	18	98	1	K
CJR612228	55	14.459	39	47	11.069	32	1x22	1x16	194	16	98	2	K
CJR612328	68	13.567	39	56	9.994	32	1x28	1x22	206	24	147	2	K
CJR612428	75	12.749	39	57	8.965	32	1x28	1x22	218	32	196	2	K
CJR613328	102	20.350	41	85	14.991	34	1x35	1x28	298	35	221	3	K
CJR613428	112	19.124	41	86	13.447	34	1x35	1x28	316	46	294	3	K
CJR614328	137	27.133	42	113	19.988	35	1x35	1x28	393	46	294	4	K
CJR614428	148	25.499	42	115	17.929	35	1x35	1x28	417	61	393	4	K

FANS	CODE	DIAM. (mm)	SUPPLY LINE	POWER (kW)		CURRENT(A)		RPM		S.POWER L.		SUPPLY LINE	POWER (kW)	CUR. (A)	RPM
				D	Y	D	Y	D	Y	D	Y				
N		500	400/3/50	0,12	0,07	0,30	0,13	670	550	62	59	230/1/50	0,15	0,66	670
K		630	400/3/50	0,33	0,19	0,80	0,38	650	480	70	63	230/1/50	0,40	1,80	€

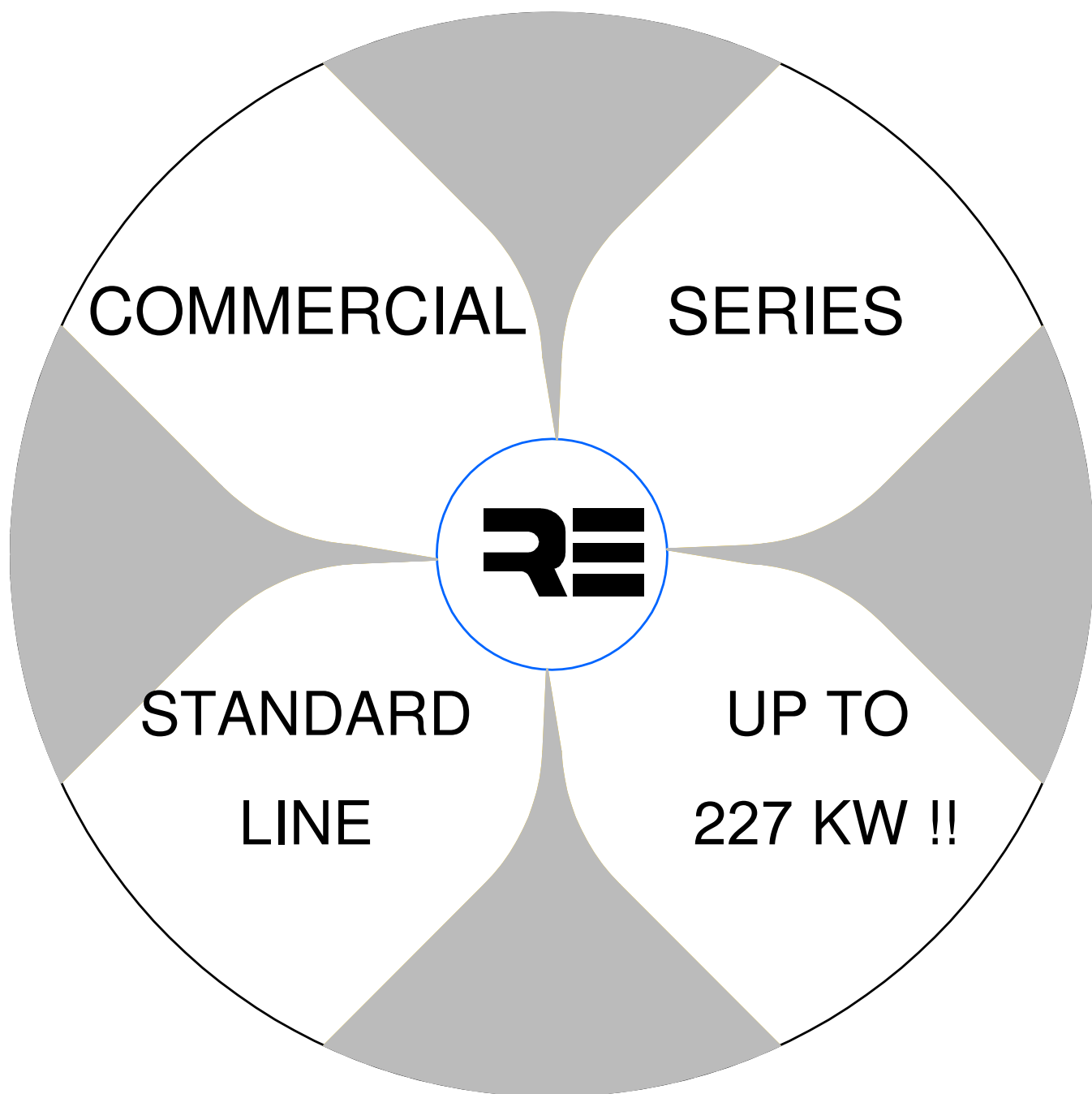
TURBO COMMERCIAL SERIES 12

CODE	D			Y			IN mm	OUT mm	WEIGHT kg	VOL dm ³	SUP m ²	Nr. FAN	FAN TYPE
	KW	m ³ /h	DB(A)	KW	m ³ /h	DB(A)							
CHR611221	18	4.106	22	13	2.140	19	1x22	1x16	101	7	41	1	M
CHR611321	21	3.364	22	14	2.017	19	1x22	1x16	107	11	61	1	M
CHR612221	38	8.211	25	25	4.280	22	1x22	1x16	172	13	82	2	M
CHR612321	40	6.729	25	28	4.035	22	1x22	1x16	184	20	123	2	M
CHR613221	57	12.317	27	38	6.420	24	1x22	1x16	243	19	123	3	M
CHR613321	61	10.093	27	42	6.052	24	1x28	1x22	261	29	184	3	M
CHR614221	76	16.423	28	51	8.560	25	1x28	1x22	372	25	164	4	M
CHR614321	82	13.457	28	55	8.069	25	1x28	1x22	396	38	245	4	M
CJR611221	21	4.307	22	17	3.018	19	1x22	1x16	109	9	49	1	M
CJR611321	24	4.073	22	15	2.122	19	1x22	1x16	115	13	74	1	M
CJR612221	43	8.613	25	34	6.035	22	1x22	1x16	194	16	98	2	M
CJR612321	49	8.147	25	30	4.244	22	1x22	1x16	206	24	147	2	M
CJR613221	63	12.920	27	51	9.053	24	1x28	1x22	280	23	147	3	M
CJR613321	74	12.220	27	45	6.366	24	1x28	1x22	298	35	221	3	M
CJR614221	84	17.227	28	68	12.071	25	1x28	1x22	369	30	196	4	M
CJR614321	82	13.457	28	60	8.488	25	1x28	1x22	393	46	294	4	M

FANS	CODE	DIAM. (mm)	SUPPLY LINE	POWER (kW)		CURRENT(A)		RPM		S.POWER L.		SUPPLY LINE	POWER (kW)	CUR. (A)	RPM
				D	Y	D	Y	D	Y	D	Y				
M		630	400/3/50	0,14	0,06	0,41	0,16	400	290	56	53				



REMOTE CONDENSER



- Standard performance series
- More than 200 different models

- Low noise execution
- Small size at high capacity



ROEN EST

Via delle Industrie 4 - 34077 Ronchi dei Legionari (GO) Italia

☎ 0039-0481-474140 📠 0039-0481-779997 ✉ info@roenest.it

STANDARD MINI COMMERCIAL SERIES

CODE	D			Y			IN	OUT	WEIGHT	VOL	SUP	Nr.	FAN
	KW	m ³ /h	DB(A)	KW	m ³ /h	DB(A)							
CLS411224	14	6.629	41	13	6.629	38	1x22	1x16	57	4	21	1	L
CLS411324	20	6.470	41	17	5.023	38	1x22	1x16	63	6	32	1	L
CLS411424	23	6.086	41	21	4.854	38	1x22	1x16	69	8	43	1	L
CLS412224	29	13.257	44	25	13.257	41	1x22	1x16	104	8	43	2	L
CLS412324	39	12.941	44	34	10.047	41	1x22	1x16	116	12	64	2	L
CLS412424	47	12.172	44	41	9.708	41	1x22	1x16	128	15	86	2	L
CLS413324	59	19.411	46	52	15.070	43	1x22	1x16	169	17	96	3	L
CLS413424	71	18.258	46	62	14.562	43	1x28	1x22	187	22	129	3	L
CLS511224	16	8.612	42	14	6.701	36	1x22	1x16	57	4	21	1	G
CLS511324	22	8.091	42	20	6.227	36	1x22	1x16	63	6	32	1	G
CLS511424	26	7.744	42	23	5.808	36	1x22	1x16	69	8	43	1	G
CLS511524	30	7.378	42	25	5.451	36	1x22	1x16	75	10	54	1	G
CLS512224	32	17.225	45	29	13.402	39	1x22	1x16	104	8	43	2	G
CLS512324	44	16.182	45	39	12.454	39	1x22	1x16	116	12	64	2	G
CLS512424	53	15.488	45	46	11.617	39	1x22	1x16	128	15	86	2	G
CLS512524	60	14.757	45	52	10.902	39	1x28	1x22	140	19	107	2	G
CLS513324	66	24.273	47	58	18.681	41	1x28	1x22	169	17	96	3	G
CLS513424	80	23.232	47	69	17.425	41	1x28	1x22	187	22	129	3	G
CLS513524	90	22.135	47	77	16.353	41	1x28	1x22	205	28	161	3	G
CLS514324	87	32.364	48	77	24.908	42	1x28	1x22	224	22	129	4	G
CLS514424	107	30.976	48	92	23.233	42	1x28	1x22	248	29	171	4	G
CLS514524	121	29.513	48	102	21.804	42	1x35	1x28	255	37	214	4	G
CLS511226	14	5.776	34	12	4.209	29	1x22	1x16	57	4	21	1	H
CLS511326	18	5.442	34	15	3.857	29	1x22	1x16	63	6	32	1	H
CLS511426	22	5.126	34	17	3.545	29	1x22	1x16	69	8	43	1	H
CLS512226	26	11.553	37	23	8.417	32	1x22	1x16	104	8	43	2	H
CLS512326	37	10.883	37	30	7.713	32	1x22	1x16	116	12	64	2	H
CLS512426	43	10.252	37	34	7.089	32	1x22	1x16	128	15	86	2	H
CLS513326	54	16.325	39	45	11.570	34	1x22	1x16	169	17	96	3	H
CLS513426	64	15.378	39	51	10.634	34	1x28	1x22	187	22	129	3	H
CLS514326	72	21.767	40	60	15.427	35	1x28	1x22	224	22	129	4	H
CLS514426	86	21.529	40	68	14.179	35	1x28	1x22	248	29	171	4	H
CLS511228	12	3.744	28	9	2.762	25	1x22	1x16	57	4	21	1	N
CLS511328	14	3.544	28	12	2.509	25	1x22	1x16	63	6	32	1	N
CLS511428	16	3.345	28	13	2.204	25	1x22	1x16	69	8	43	1	N
CLS512228	22	7.487	31	18	5.525	28	1x22	1x16	104	8	43	2	N
CLS512328	29	7.089	31	23	5.019	28	1x22	1x16	116	12	64	2	N
CLS512428	33	6.690	31	24	4.407	28	1x22	1x16	128	15	86	2	N
CLS513328	43	10.633	33	35	7.528	30	1x22	1x16	169	17	96	3	N
CLS513428	50	10.035	33	37	6.611	30	1x22	1x16	187	22	129	3	N
CLS514328	57	14.177	34	47	10.037	31	1x22	1x16	224	22	129	4	N
CLS514428	66	14.049	34	49	8.815	31	1x22	1x16	248	29	171	4	N

FANS	CODE	DIAM. (mm)	SUPPLY LINE	POWER (kW)		CURRENT(A)		RPM		S.POWER L.		SUPPLY LINE	POWER (kW)	CUR. (A)	RPM
				D	Y	D	Y	D	Y	D	Y				
G		500	400/3/50	0,78	0,55	1,35	0,94	1.340	1.000	76	70	230/1/50	0,77	3,40	1.210
H		500	400/3/50	0,32	0,20	0,74	0,41	900	640	68	63	230/1/50	0,29	1,25	890
L		450	400/3/50	0,40	0,30	0,95	0,55	1.400	1.180	75	72	230/1/50	0,44	2,25	1.380
N		500	400/3/50	0,12	0,07	0,30	0,13	670	550	62	59	230/1/50	0,15	0,66	670

STANDARD COMMERCIAL SERIES 4

CODE	D			Y			IN	OUT	WEIGHT	VOL	SUP	Nr.	FAN	TYPE
	KW	m ³ /h	DB(A)	KW	m ³ /h	DB(A)								
CGS511224	20	9.078	42	17	7.044	36	1x22	1x16	86	6	33	1	G	
CGS511324	26	8.767	42	23	6.823	36	1x22	1x16	92	8	49	1	G	
CGS511424	32	8.477	42	28	6.510	36	1x22	1x16	98	11	65	1	G	
CGS511524	36	8.152	42	31	6.129	36	1x22	1x16	104	14	82	1	G	
CGS512224	39	18.156	45	34	14.087	39	1x22	1x16	144	11	65	2	G	
CGS512324	54	17.533	45	46	13.647	39	1x22	1x16	156	16	98	2	G	
CGS512424	63	16.953	45	56	13.019	39	1x28	1x22	168	21	131	2	G	
CGS512524	73	16.304	45	61	12.259	39	1x28	1x22	180	27	164	2	G	
CGS513324	80	26.300	47	69	20.470	41	1x28	1x22	218	24	147	3	G	
CGS513424	95	25.430	47	84	19.529	41	1x35	1x28	236	31	196	3	G	
CGS513524	109	24.456	47	92	18.388	41	1x35	1x28	254	39	245	3	G	
CGS514424	128	33.907	48	112	26.039	42	1x35	1x28	309	42	262	4	G	
CGS514524	146	32.608	48	122	24.517	42	1x35	1x28	333	52	327	4	G	
CHS511224	23	9.226	42	21	7.247	36	1x22	1x16	101	7	41	1	G	
CHS511324	30	9.060	42	28	7.002	36	1x22	1x16	107	11	61	1	G	
CHS511424	37	8.841	42	32	6.867	36	1x22	1x16	113	15	82	1	G	
CHS511524	42	8.576	42	35	6.545	36	1x22	1x16	119	18	102	1	G	
CHS512224	46	18.451	45	40	14.494	39	1x22	1x16	172	13	82	2	G	
CHS512324	60	18.120	45	54	14.003	39	1x28	1x22	184	20	123	2	G	
CHS512424	74	17.681	45	63	13.733	39	1x28	1x22	196	27	164	2	G	
CHS512524	83	17.151	45	69	13.090	39	1x28	1x22	208	33	204	2	G	
CHS513324	90	27.180	47	82	21.005	41	1x28	1x22	261	29	184	3	G	
CHS513424	110	26.522	47	95	20.600	41	1x35	1x28	279	39	245	3	G	
CHS513524	125	25.727	47	104	19.635	41	1x35	1x28	297	48	307	3	G	
CHS514424	147	35.363	48	128	27.467	42	1x35	1x28	420	51	327	4	G	
CHS514524	167	34.303	48	138	26.180	42	1x35	1x28	444	63	409	4	G	
CHS611224	30	16.800	56	28	13.552	51	1x22	1x16	101	7	41	1	I	
CHS611324	41	15.890	56	37	12.650	51	1x22	1x16	107	11	61	1	I	
CHS611424	51	15.110	56	44	11.973	51	1x22	1x16	113	15	82	1	I	
CHS611524	57	14.414	56	50	11.400	51	1x22	1x16	119	18	102	1	I	
CHS612224	60	33.600	59	54	27.104	54	1x22	1x16	172	13	82	2	I	
CHS612324	83	31.780	59	74	25.300	54	1x28	1x22	184	20	123	2	I	
CHS612424	100	30.220	59	89	23.947	54	1x35	1x28	196	27	164	2	I	
CHS612524	114	28.828	59	99	22.800	54	1x35	1x28	208	33	204	2	I	
CHS613324	124	47.670	61	110	37.950	56	1x35	1x28	261	29	184	3	I	
CHS613424	151	45.330	61	132	35.920	56	1x35	1x28	279	39	245	3	I	
CHS613524	170	43.242	61	149	34.200	56	1x35	1x28	297	48	307	3	I	
CHS614424	201	60.440	62	176	47.893	57	1x42	1x35	420	51	327	4	I	
CHS614524	227	57.656	62	199	45.600	57	1x42	1x35	444	63	409	4	I	
CJS611224	33	17.218	56	31	14.069	51	1x22	1x16	109	9	49	1	I	
CJS611324	46	16.428	56	41	13.420	51	1x22	1x16	115	13	74	1	I	
CJS611424	56	16.006	56	51	12.843	51	1x22	1x16	121	18	98	1	I	
CJS611524	64	15.442	56	56	12.223	51	1x28	1x22	127	22	123	1	I	
CJS612224	67	34.435	59	61	28.138	54	1x28	1x22	194	16	98	2	I	
CJS612324	92	32.857	59	83	26.841	54	1x28	1x22	206	24	147	2	I	
CJS612424	113	32.013	59	100	25.685	54	1x35	1x28	218	32	196	2	I	
CJS612524	128	30.883	59	111	24.446	54	1x35	1x28	230	40	245	2	I	
CJS613324	138	49.285	61	125	40.261	56	1x35	1x28	298	35	221	3	I	
CJS613424	169	48.019	61	151	38.528	56	1x35	1x28	316	46	294	3	I	
CJS613524	192	46.325	61	167	36.669	56	1x42	1x35	334	58	368	3	I	
CJS614424	227	64.025	62	201	51.371	57	1x42	1x35	417	61	393	4	I	
CJS614524	256	61.767	62	223	48.892	57	1x42	1x35	441	76	491	4	I	

FANS	CODE	DIAM. (mm)	SUPPLY LINE	POWER (kW)		CURRENT(A)		RPM		S.POWER L.		SUPPLY LINE	POWER (kW)	CUR. (A)	RPM
				D	Y	D	Y	D	Y	D	Y				
G		500	400/3/50	0,78	0,55	1,35	0,94	1.340	1.000	76	70	230/1/50	0,77	3,40	1.210
I		630	400/3/50	1,90	1,35	3,20	2,20	1.340	1.070	90	85				

STANDARD COMMERCIAL SERIES 6

CODE	D			Y			IN	OUT	WEIGHT	VOL	SUP	Nr.	FAN	TYPE
	KW	m ³ /h	DB(A)	KW	m ³ /h	DB(A)								
CGS511226	16	5.973	34	14	4.322	29	1x22	1x16	86	6	33	1	H	
CGS511326	22	5.743	34	18	4.225	29	1x22	1x16	92	8	49	1	H	
CGS511426	25	5.518	34	21	3.947	29	1x22	1x16	98	11	65	1	H	
CGS511526	28	5.326	34	21	3.586	29	1x22	1x16	104	14	82	1	H	
CGS512226	32	11.945	37	28	8.644	32	1x22	1x16	144	11	65	2	H	
CGS512326	43	11.487	37	36	8.450	32	1x22	1x16	156	16	98	2	H	
CGS512426	51	11.037	37	40	7.893	32	1x22	1x16	168	21	131	2	H	
CGS512526	55	10.651	37	42	7.171	32	1x22	1x16	180	27	164	2	H	
CGS513326	64	17.230	39	54	12.675	34	1x28	1x22	218	24	147	3	H	
CGS513426	76	16.555	39	61	11.840	34	1x28	1x22	236	31	196	3	H	
CGS513526	83	15.977	39	63	10.757	34	1x28	1x22	254	39	245	3	H	
CGS514426	101	22.073	40	82	15.787	35	1x35	1x28	309	42	262	4	H	
CGS514526	110	21.303	40	84	14.343	35	1x35	1x28	333	52	327	4	H	
CHS511226	18	6.192	34	16	4.463	29	1x22	1x16	101	7	41	1	H	
CHS511326	24	5.927	34	20	4.225	29	1x22	1x16	107	11	61	1	H	
CHS511426	28	5.756	34	22	3.999	29	1x22	1x16	113	15	82	1	H	
CHS511526	31	5.607	34	23	3.825	29	1x22	1x16	119	18	102	1	H	
CHS512226	38	12.383	37	31	8.926	32	1x22	1x16	172	13	82	2	H	
CHS512326	49	11.853	37	39	8.450	32	1x22	1x16	184	20	123	2	H	
CHS512426	56	11.513	37	45	7.997	32	1x22	1x16	196	27	164	2	H	
CHS512526	62	11.214	37	47	7.651	32	1x28	1x22	208	33	204	2	H	
CHS513326	74	17.780	39	59	12.675	34	1x28	1x22	261	29	184	3	H	
CHS513426	84	17.269	39	67	11.996	34	1x28	1x22	279	39	245	3	H	
CHS513526	93	16.821	39	70	11.476	34	1x28	1x22	297	48	307	3	H	
CHS514426	112	23.025	40	89	15.995	35	1x35	1x28	420	51	327	4	H	
CHS514526	124	22.428	40	93	15.301	35	1x35	1x28	444	63	409	4	H	
CHS611226	23	9.295	43	22	8.555	38	1x22	1x16	101	7	41	1	J	
CHS611326	32	9.789	43	30	8.093	38	1x22	1x16	107	11	61	1	J	
CHS611426	39	9.389	43	33	7.654	38	1x22	1x16	113	15	82	1	J	
CHS611526	43	9.034	43	37	7.101	38	1x22	1x16	119	18	102	1	J	
CHS612226	46	18.590	46	44	17.110	41	1x22	1x16	172	13	82	2	J	
CHS612326	66	19.579	46	59	16.187	41	1x28	1x22	184	20	123	2	J	
CHS612426	78	18.778	46	68	15.308	41	1x28	1x22	196	27	164	2	J	
CHS612526	86	18.069	46	74	14.203	41	1x28	1x22	208	33	204	2	J	
CHS613326	98	29.368	48	89	24.280	43	1x35	1x28	261	29	184	3	J	
CHS613426	116	28.167	48	101	22.962	43	1x35	1x28	279	39	245	3	J	
CHS613526	129	27.103	48	110	21.304	43	1x35	1x28	297	48	307	3	J	
CHS614426	155	37.556	49	135	30.616	44	1x35	1x28	420	51	327	4	J	
CHS614526	172	36.137	49	147	28.405	44	1x35	1x28	444	63	409	4	J	
CJS611226	26	10.445	43	24	8.798	38	1x22	1x16	109	9	49	1	J	
CJS611326	36	10.115	43	32	8.427	38	1x22	1x16	115	13	74	1	J	
CJS611426	43	9.795	43	38	8.065	38	1x22	1x16	121	18	98	1	J	
CJS611526	47	9.509	43	41	7.581	38	1x22	1x16	127	22	123	1	J	
CJS612226	53	20.889	46	49	17.596	41	1x22	1x16	194	16	98	2	J	
CJS612326	72	20.231	46	66	16.853	41	1x28	1x22	206	24	147	2	J	
CJS612426	86	19.589	46	76	16.130	41	1x28	1x22	218	32	196	2	J	
CJS612526	95	19.018	46	81	15.162	41	1x28	1x22	230	40	245	2	J	
CJS613326	108	30.346	48	98	25.280	43	1x35	1x28	298	35	221	3	J	
CJS613426	129	29.384	48	114	24.195	43	1x35	1x28	316	46	294	3	J	
CJS613526	142	28.527	48	122	22.743	43	1x35	1x28	334	58	368	3	J	
CJS614426	171	39.179	49	152	32.260	44	1x35	1x28	417	61	393	4	J	
CJS614526	190	38.036	49	162	30.324	44	1x42	1x35	441	76	491	4	J	

FANS	CODE	DIAM. (mm)	SUPPLY LINE	POWER (kW)		CURRENT(A)		RPM		S.POWER L.		SUPPLY LINE	POWER (kW)	CUR. (A)	RPM
				D	Y	D	Y	D	Y	D	Y				
H		500	400/3/50	0,32	0,20	0,74	0,41	900	640	68	63	230/1/50	0,29	1,25	890
J		630	400/3/50	0,69	0,48	1,25	0,78	900	690	77	72	230/1/50	0,78	3,50	ε

STANDARD COMMERCIAL SERIES 8

CODE	D			Y			IN	OUT	WEIGHT	VOL	SUP	Nr.	FAN
	KW	m ³ /h	DB(A)	KW	m ³ /h	DB(A)							
CGS511228	13	3.874	28	10	2.878	25	1x22	1x16	86	6	33	1	N
CGS511328	16	3.732	28	14	2.696	25	1x22	1x16	92	8	49	1	N
CGS512228	25	7.749	31	22	5.756	28	1x22	1x16	144	11	65	2	N
CGS512328	33	7.463	31	28	5.391	28	1x22	1x16	156	16	98	2	N
CGS513228	37	11.623	33	33	8.634	30	1x22	1x16	200	16	98	3	N
CGS513328	50	11.195	33	41	8.087	30	1x22	1x16	218	24	147	3	N
CGS514228	49	15.497	34	48	11.704	31	1x22	1x16	261	21	131	4	N
CGS514228	49	15.497	34	44	11.512	31	1x22	1x16	261	21	131	4	N
CGS514328	67	14.927	34	54	10.783	31	1x28	1x22	285	31	196	4	N
CHS511228	14	3.931	28	13	2.926	25	1x22	1x16	101	7	41	1	N
CHS511328	18	3.814	28	15	2.773	25	1x22	1x16	107	11	61	1	N
CHS512228	29	7.862	31	24	5.852	28	1x22	1x16	172	13	82	2	N
CHS512328	37	7.627	31	30	5.547	28	1x22	1x16	184	20	123	2	N
CHS513228	43	11.793	33	36	8.778	30	1x22	1x16	243	19	123	3	N
CHS513328	56	11.441	33	45	8.320	30	1x22	1x16	261	29	184	3	N
CHS514328	75	15.255	34	60	11.093	31	1x28	1x22	396	38	245	4	N
CHS611228	21	7.287	36	18	5.667	29	1x22	1x16	101	7	41	1	K
CHS611328	26	6.890	36	23	5.217	29	1x22	1x16	107	11	61	1	K
CHS611428	31	6.527	36	26	5.082	29	1x22	1x16	113	15	82	1	K
CHS611528	34	6.236	36	27	4.505	29	1x22	1x16	119	18	102	1	K
CHS612228	40	14.575	39	36	11.333	32	1x22	1x16	172	13	82	2	K
CHS612328	54	13.779	39	46	10.433	32	1x22	1x16	184	20	123	2	K
CHS612428	61	13.053	39	52	10.163	32	1x28	1x22	196	27	164	2	K
CHS612528	67	12.473	39	53	9.009	32	1x28	1x22	208	33	204	2	K
CHS613328	80	20.669	41	69	15.650	34	1x28	1x22	261	29	184	3	K
CHS613428	92	19.580	41	78	15.245	34	1x28	1x22	279	39	245	3	K
CHS613528	101	18.709	41	80	13.514	34	1x35	1x28	297	48	307	3	K
CHS614428	123	26.107	42	105	20.327	35	1x35	1x28	420	51	327	4	K
CHS614528	134	24.945	42	106	18.019	35	1x35	1x28	444	63	409	4	K
CJS611228	23	7.496	36	20	5.854	29	1x22	1x16	109	9	49	1	K
CJS611328	29	7.154	36	25	5.471	29	1x22	1x16	115	13	74	1	K
CJS611428	34	6.837	36	28	5.103	29	1x22	1x16	121	18	98	1	K
CJS611528	37	6.583	36	29	4.820	29	1x22	1x16	127	22	123	1	K
CJS612228	45	14.993	39	39	11.707	32	1x22	1x16	194	16	98	2	K
CJS612328	59	14.307	39	49	10.943	32	1x22	1x16	206	24	147	2	K
CJS612428	68	13.673	39	55	10.206	32	1x28	1x22	218	32	196	2	K
CJS612528	74	13.165	39	58	9.640	32	1x28	1x22	230	40	245	2	K
CJS613328	87	21.461	41	75	16.414	34	1x28	1x22	298	35	221	3	K
CJS613428	102	20.510	41	84	15.309	34	1x35	1x28	316	46	294	3	K
CJS613528	110	19.748	41	88	14.460	34	1x35	1x28	334	58	368	3	K
CJS614428	136	27.347	42	112	20.412	35	1x35	1x28	417	61	393	4	K
CJS614528	147	26.331	42	117	19.280	35	1x35	1x28	441	76	491	4	K

FANS	CODE	DIAM. (mm)	SUPPLY LINE	POWER (kW)		CURRENT(A)		RPM		S.POWER L.		SUPPLY LINE	POWER (kW)	CUR. (A)	RPM
				D	Y	D	Y	D	Y	D	Y				
N		500	400/3/50	0,12	0,07	0,30	0,13	670	550	62	59	230/1/50	0,15	0,66	670
K		630	400/3/50	0,33	0,19	0,80	0,38	650	480	70	63	230/1/50	0,40	1,80	€

STANDARD COMMERCIAL SERIES 12

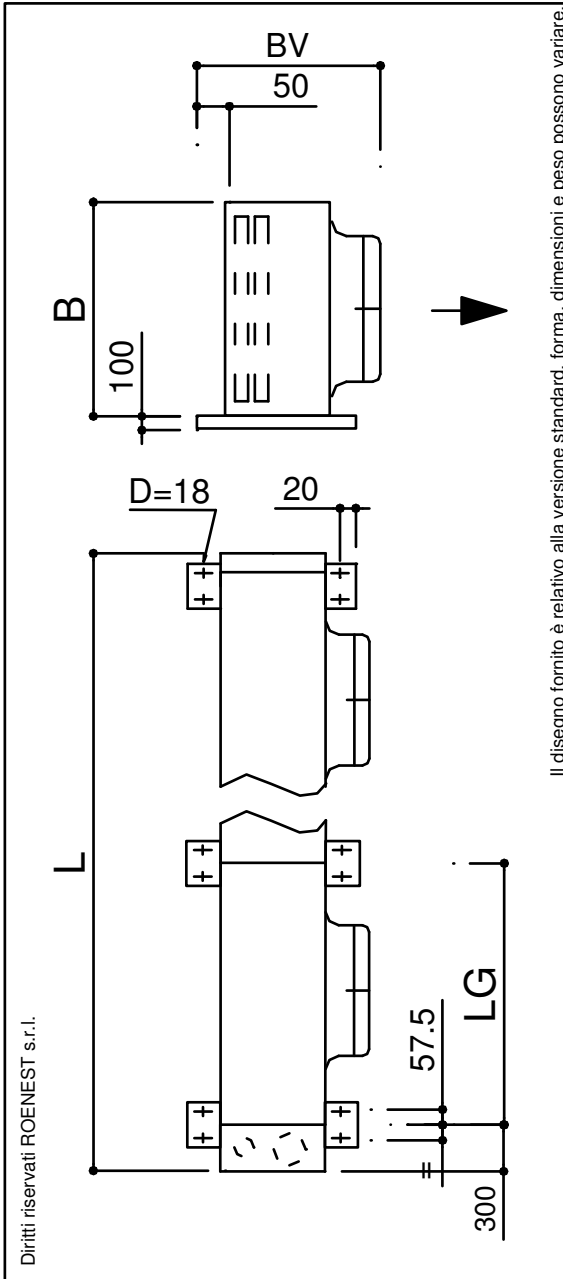
CODE	D			Y			IN	OUT	WEIGHT	VOL	SUP	Nr.	FAN
	KW	m ³ /h	DB(A)	KW	m ³ /h	DB(A)							
CHS611221	16	4.524	22	12	2.730	19	1x22	1x16	101	7	41	1	M
CHS611321	20	4.008	22	15	2.760	19	1x22	1x16	107	11	61	1	M
CHS612221	32	9.048	25	23	5.459	22	1x22	1x16	172	13	82	2	M
CHS612321	38	8.017	25	30	5.520	22	1x22	1x16	184	20	123	2	M
CHS613221	47	13.572	27	35	8.189	24	1x22	1x16	243	19	123	3	M
CHS613321	58	12.025	27	44	8.280	24	1x22	1x16	261	29	184	3	M
CHS614221	63	18.096	28	47	10.919	25	1x28	1x22	372	25	164	4	M
CHS614321	77	16.033	28	60	11.040	25	1x28	1x22	396	38	245	4	M
CJS611221	17	4.696	22	15	3.611	19	1x22	1x16	109	9	49	1	M
CJS611321	21	4.229	22	16	2.947	19	1x22	1x16	115	13	74	1	M
CJS612221	34	9.393	25	30	7.221	22	1x22	1x16	194	16	98	2	M
CJS612321	43	8.458	25	33	5.894	22	1x22	1x16	206	24	147	2	M
CJS613221	52	14.089	27	45	10.832	24	1x22	1x16	280	23	147	3	M
CJS613321	63	12.687	27	49	8.841	24	1x28	1x22	298	35	221	3	M
CJS614221	69	18.785	28	60	14.443	25	1x28	1x22	369	30	196	4	M
CJS614321	77	16.033	28	66	11.788	25	1x28	1x22	393	46	294	4	M

FANS	CODE	DIAM. (mm)	SUPPLY LINE	POWER (kW)		CURRENT(A)		RPM		S.POWER L.		SUPPLY LINE	POWER (kW)	CUR. (A)	RPM
				D	Y	D	Y	D	Y	D	Y				
M		630	400/3/50	0,14	0,06	0,41	0,16	400	290	56	53				

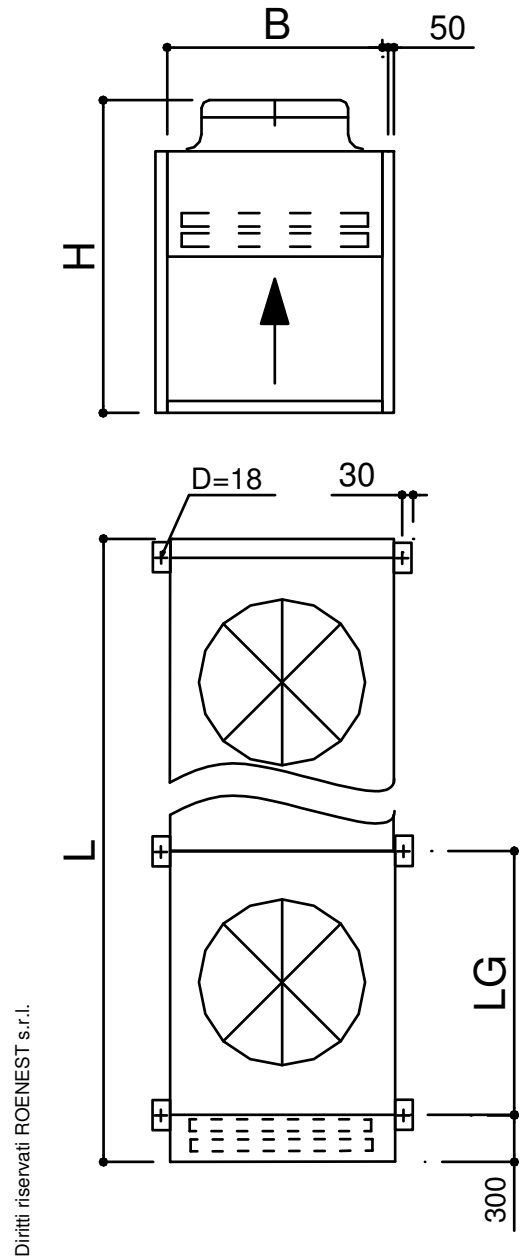
DIMENSIONS

INSTALLATION

VERTICAL



HORIZONTAL



SERIES		□				□□				□□□				□□□□			
		CG	CH	CJ	CL	CG	CH	CJ	CL	CG	CH	CJ	CL	CG	CH	CJ	CL
L	mm	1375	1625	1625	1175	2375	2875	2875	1975	3375	4125	4125	2775	4375	5375	5375	3575
LG	mm	1000	1250	1250	800	1250	1250	1250	800	1000	1250	1250	800	1000	1250	1250	800
B	mm	883	883	1060	835	885	1060	1060	835	883	883	1060	835	883	883	1060	835
H	mm	1120	1120	1120	850	1120	1120	1120	850	1120	1120	1120	850	1120	1120	1120	850
BV	mm	~600				~600				~600				~600			

The drawing and the dimension present in this catalogue are relative at the standard version .Shape and dimension may vary according to the options selected